



Release Notes 2022

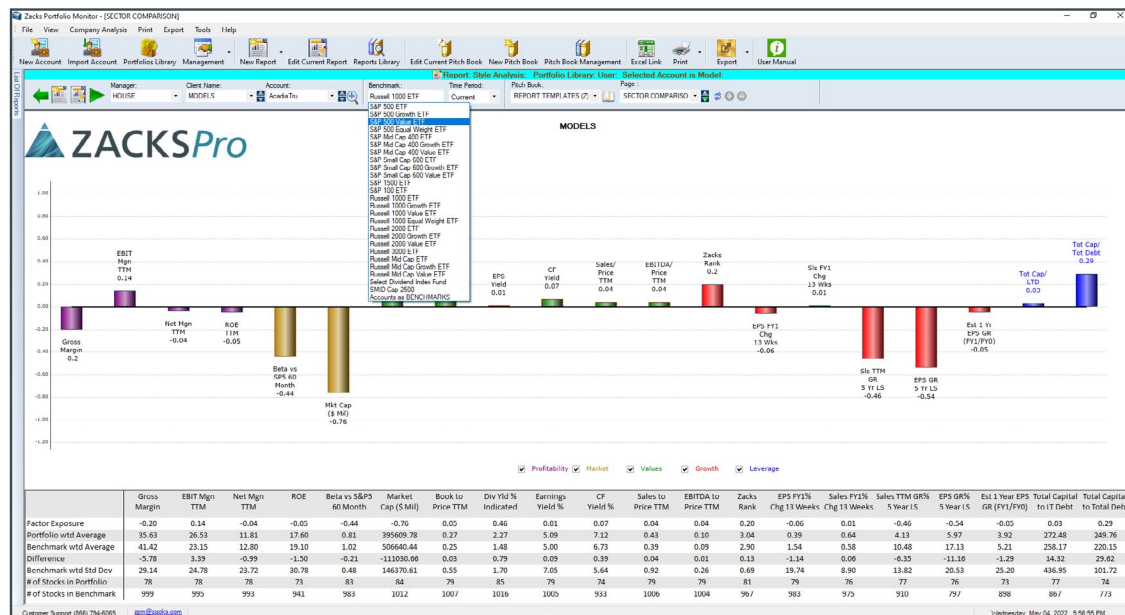
Table of Contents

Zacks Portfolio Monitor	3
Portfolio Style Analysis Charting Benchmark Options.	3
Zacks Earnings Certain Model Portfolios Added	3
Zacks Earnings Certain Admiral Portfolio	
Zacks Earnings Certain Dividend	
Zacks Earnings Certain Tilts	
ETF Model Portfolios Added	4
Zacks—Core Conservative	
Zacks—Core Moderate	
Zacks—Core Aggressive	
Zacks—Core Income	
ZRS Core	5
Charting enhancement	
Company Overview Page	
Marketing Monitor	9
Ability to increase font size on the intraday quote screen	
Expanded Quote—Last Trade Price is now 30-seconds delayed from BAT	
ZRS Support	10
All pop-ups including help topics use your default internet browsers	
Training Videos have been added	
Financials	11
The view under Financials > Quarterly Summary & Estimates now displays 30 years of historical data (when applicable).	

Zacks Portfolio Monitor

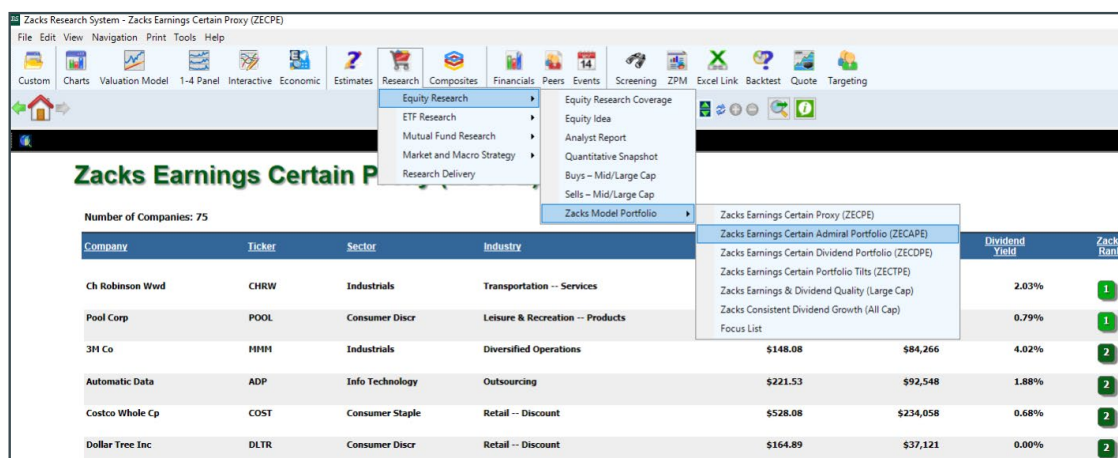
Choose any portfolio you have loaded as a benchmark

Within the Portfolio Style Analysis report, you can choose any portfolio you have loaded as a benchmark including the standard list of S&P and Russell ETF's.



Zacks Earnings Certain Model Portfolios Added

1. Zacks Earnings Certain Admiral Portfolio
2. Zacks Earnings Certain Dividend
3. Zacks Earnings Certain Tilts



ETF Model Portfolios Added

Zacks Advisor Tools offers a range of ETF model portfolios that give you a powerful way to build broadly diversified, effective ETF strategies that align with your investment goals. Our model portfolios span the full range of investment objectives and risk thresholds. All of our model portfolios are designed to improve returns and reduce risk at each threshold, and are adjusted in step with monthly forward-looking risk projections. Most importantly, our ETF model portfolios give you a powerful tool to optimize your asset allocation.

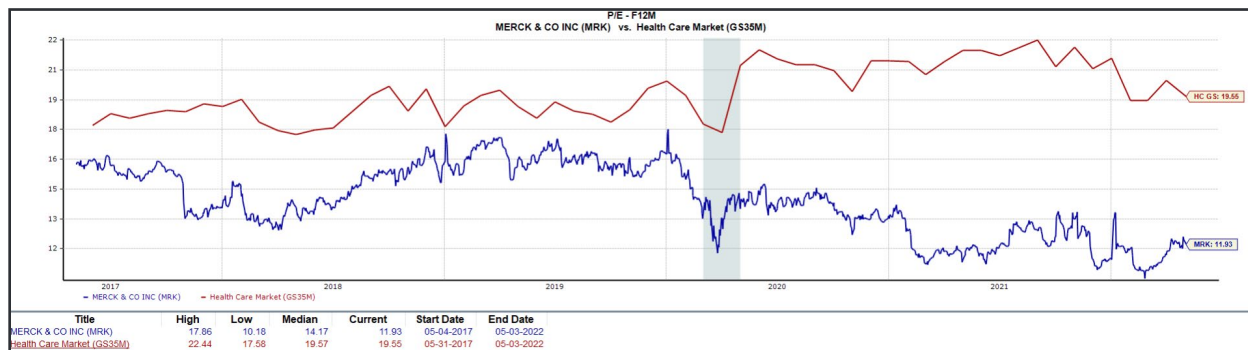
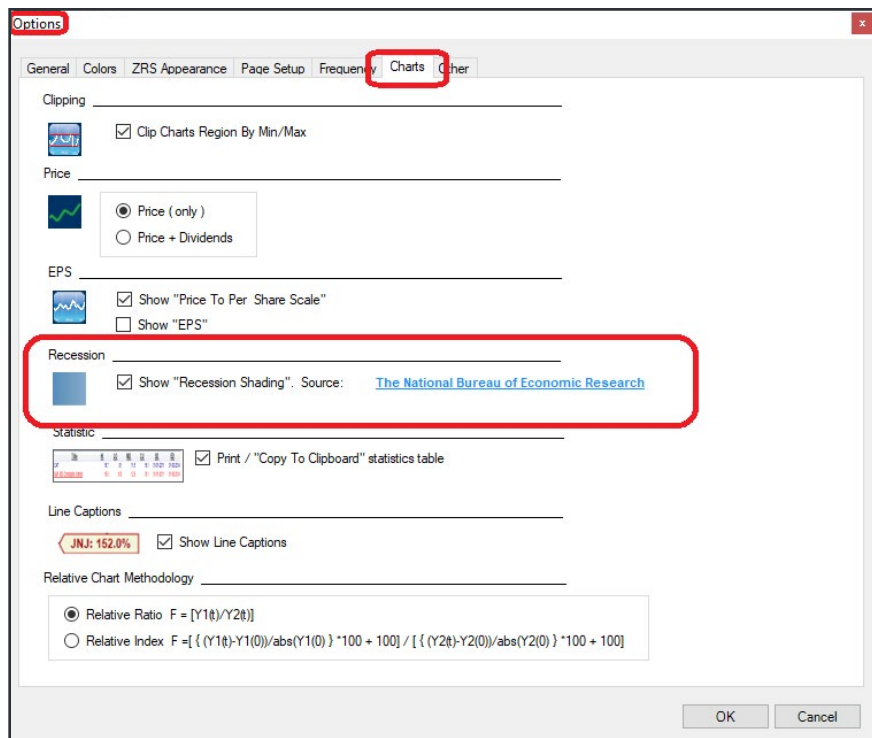
1. Zacks- Core Conservative
2. Zacks- Core Moderate
3. Zacks- Core Aggressive
4. Zacks- Core Income

The screenshot shows the Zacks Research System interface. The 'ETF Model Portfolios' menu is open, listing options like Equity Research, ETF Research, Mutual Fund Research, Market and Macro Strategy, Research Delivery, ETF Research Coverage, ETF Rank, Buys - ETF Rank List, and ETF Model Portfolios. Below the menu, the 'ETF Model Portfolio - Zacks - Core Conservative' is displayed. It shows a table of 13 companies with columns for Name, Symbol, Issuer, Investment Category, Last Close Price, Weight, Expense Ratio, and Wtd Exp Ratio. The total portfolio weight is 100.00% and the total expense ratio is 0.063%.

Name	Symbol	Issuer	Investment Category	Last Close Price	Weight	Expense Ratio	Wtd Exp Ratio	Report
ISHARES FLOATING RATE BOND ETF	FLOT	BLACKROCK	Investment Grade Corporate Bond ETFs	\$60.82	7.90%	0.15%	0.012%	
VANGUARD SHORT-TERM INFLATION-PROTECT SEC ETF	VTIP	VANGUARD	Inflation-Protected Bond ETFs	\$50.45	5.60%	0.04%	0.002%	
ISHARES CORE S&P SMALL-CAP ETF	IJR	BLACKROCK	Style Box - Small Cap Blend	\$101.22	4.30%	0.06%	0.003%	
ISHARES MSCI USA MIN VOL FACTOR ETF	USMV	BLACKROCK	Style Box - Large Cap Blend	\$73.47	2.70%	0.10%	0.004%	
VANGUARD MID CAP ETF	VO	VANGUARD	Style Box - Mid Cap Blend	\$221.09	8.50%	0.04%	0.003%	
VANGUARD S&P 500 ETF	VOO	VANGUARD	Style Box - Large Cap Blend	\$382.73	22.10%	0.03%	0.007%	
VANGUARD GROWTH ETF	VUIG	VANGUARD	Style Box - Large Cap Growth	\$253.64	1.80%	0.04%	0.001%	
ISHARES CORE U.S. AGGREGATE BOND ETF	AGG	BLACKROCK	Total Bond Market ETFs	\$102.36	23.00%	0.03%	0.007%	
INVESCO DB BASE METALS ETF	DBB	INVESCO	Industrial Metals ETFs	\$23.21	1.30%	0.77%	0.010%	
ISHARES CORE MSCI EAFE ETF	IEFA	BLACKROCK	Broad Developed World ETFs	\$65.09	2.70%	0.07%	0.002%	
ISHARES CORE MSCI IEMG	IEMG	BLACKROCK	Broad Emerging Market ETFs	\$52.53	0.50%	0.09%	0.000%	
Portfolio Total					100.00%	0.063%		

ZRS Core

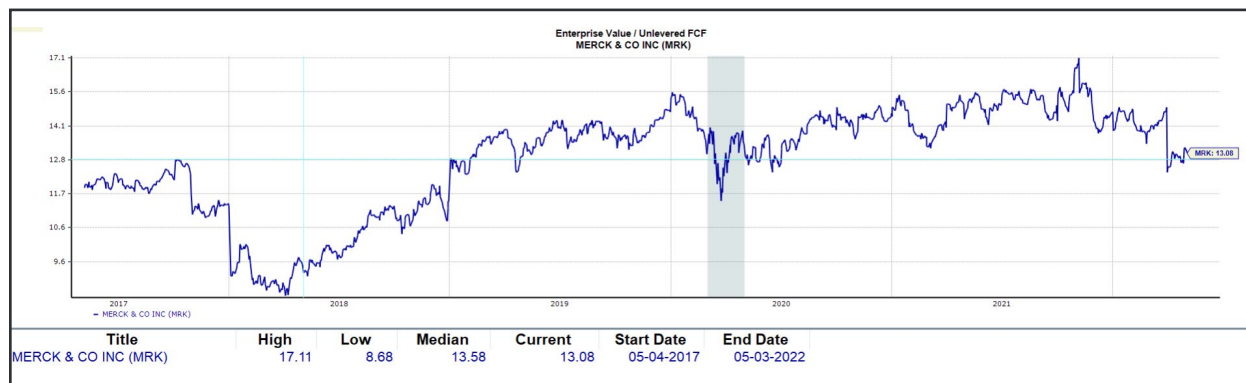
Charting enhancement: Updated Recession Bands—Within ZRS, Tools > Options > Charts



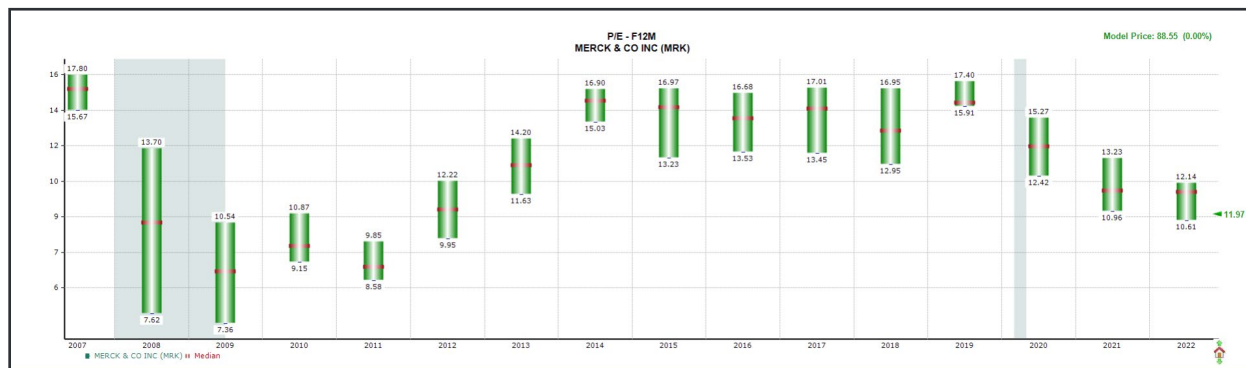
NEW—Profit and Leverage Pitch Book to quickly access all pages in one click!



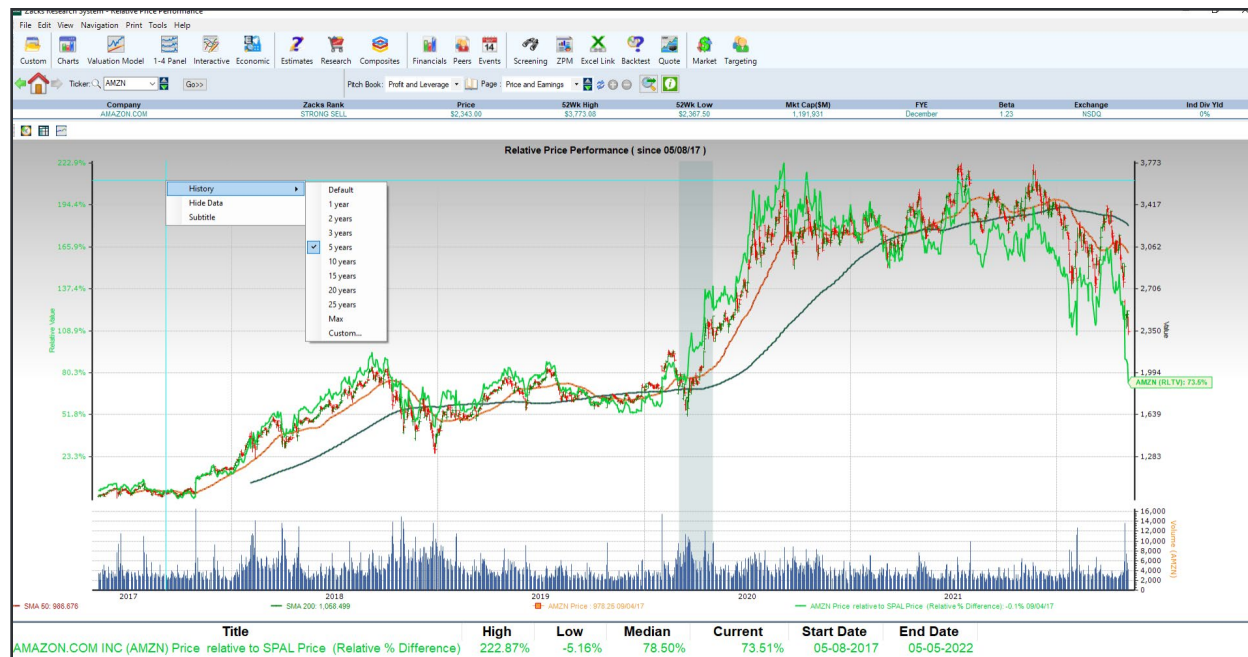
Valuation Charts: Added new chart, Enterprise Value / Unlevered FCF



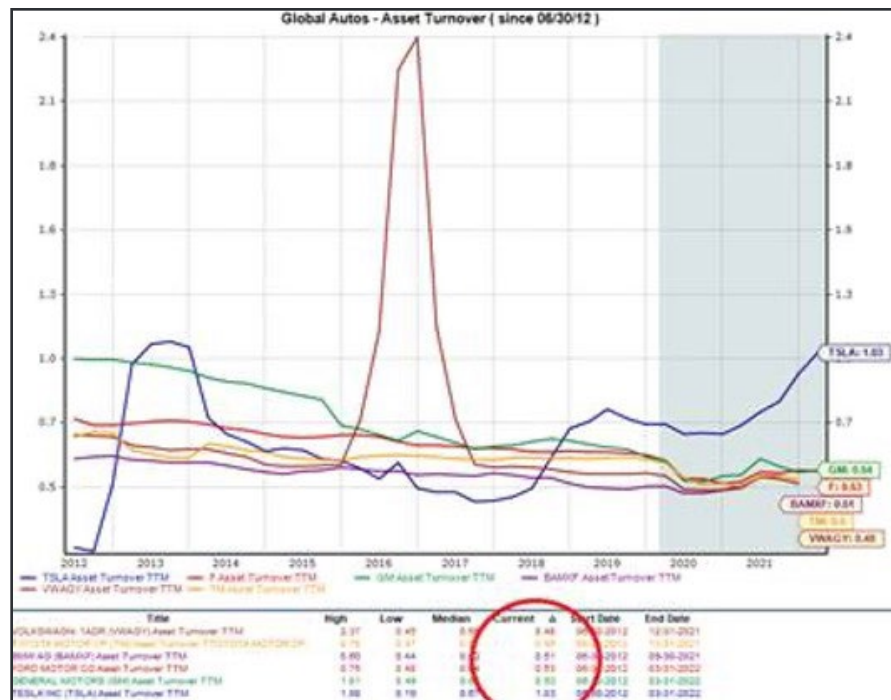
All fundamental charts can now be viewed as bar charts



Added history options to Relative Price Performance



Users can now sort the statistics table on any ZRS chart to rank companies in ascending or descending order of the statistic being charted.



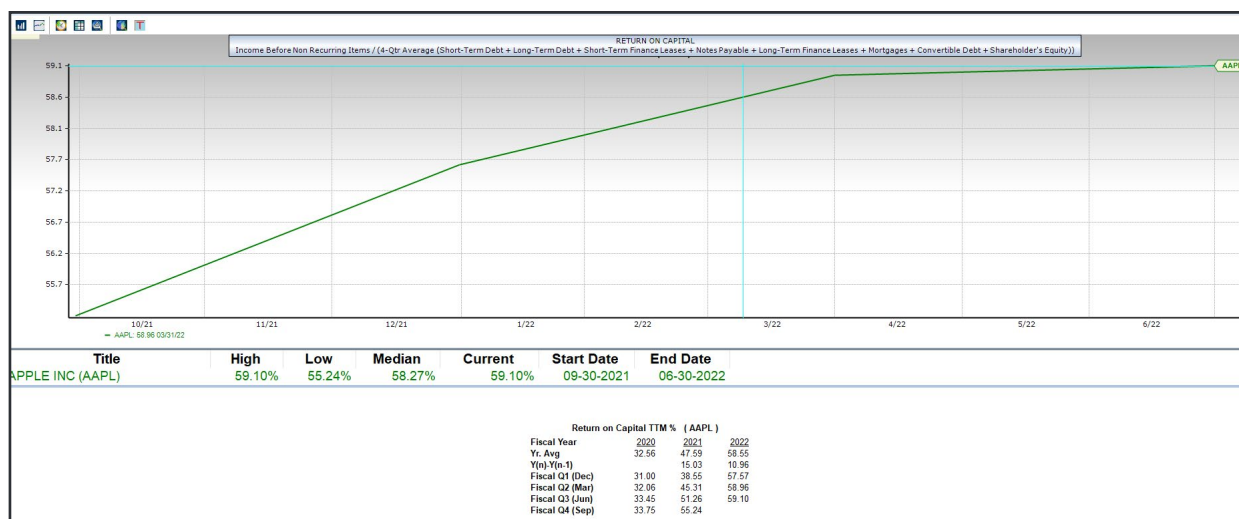
We have made several improvements to the underlying charting calculations for several items in ZRS to more comprehensively include all debt and debt-like items on the balance sheet. This includes the inclusion of notes payable, finance (capital) leases, mortgages, and convertible debt as part of the calculation of total capital. We believe these improvements will greatly increase these charts' usefulness and accuracy in measuring leverage and profitability.

The items we updated are:

1. Return on Capital
2. Return on Invested Capital
3. Total Debt / Capital
4. Net Debt / Capital

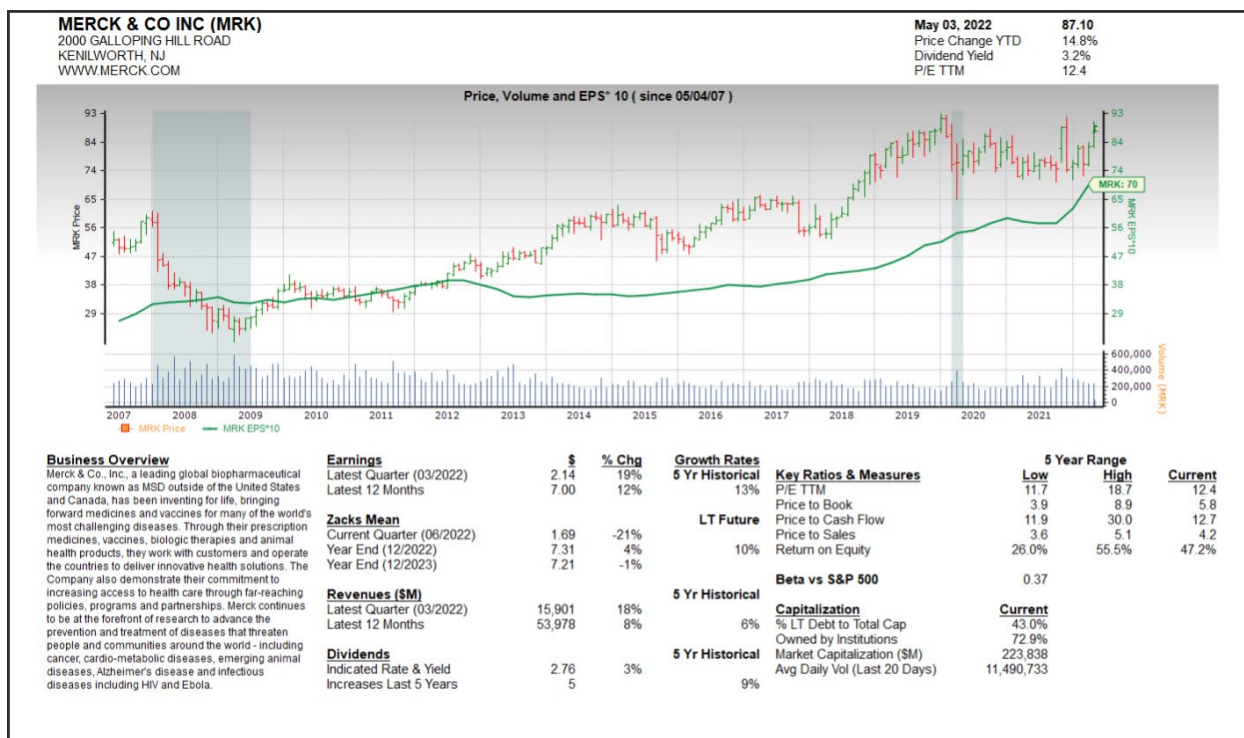
You can access these charts as always from ZRS by clicking on the **Charts tab > Fundamental History > Return on Capital or Leverage.**

To see the exact calculation methodology for these or any other charts in ZRS, simply mouse-over the header of the chart. You'll then see the calculation description.



Company Overview Page

Choose EPS BNRI or EPS*10 of with the price axis on left and EPS axis on right



Options

General Colors ZRS Appearance Page Setup Frequency Charts Other

Zacks Research Delivery _____
 Only Main Ticker All Current Ticker List

Minimize ZRS Application in Windows System Tray _____
 Yes

Save Last Session _____
 Yes

ZPM _____
 Single Portfolio Library

Consensus Estimates _____
 Street Estimates

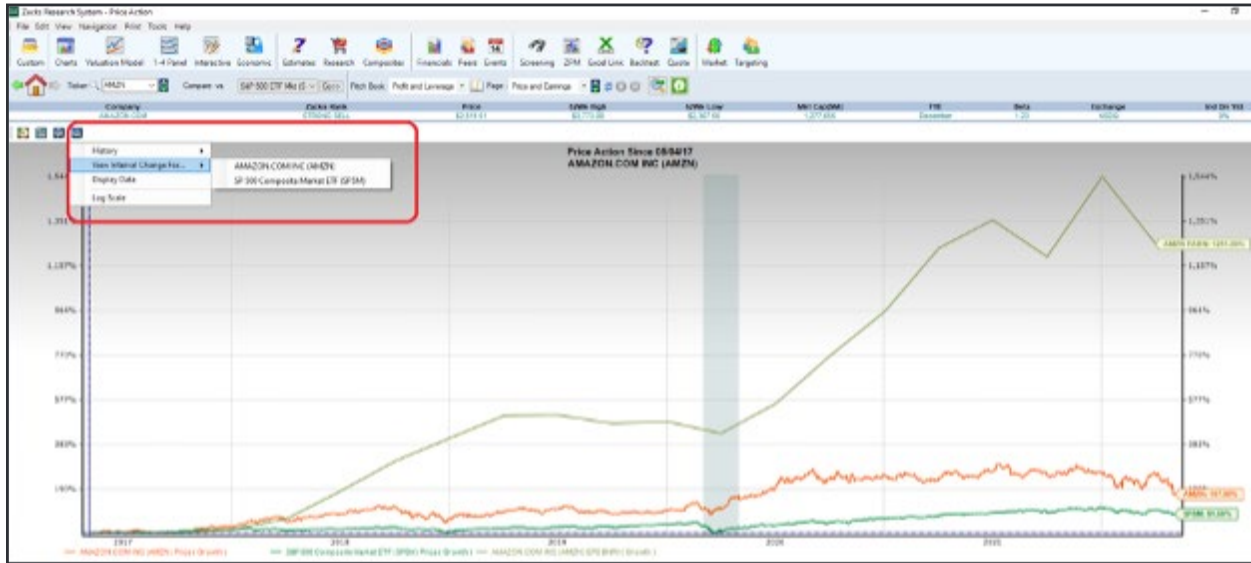
Excel _____
 Excel 97-2003

Custom Variables _____
 Yes

Company Overview _____
 Display EPS * 10

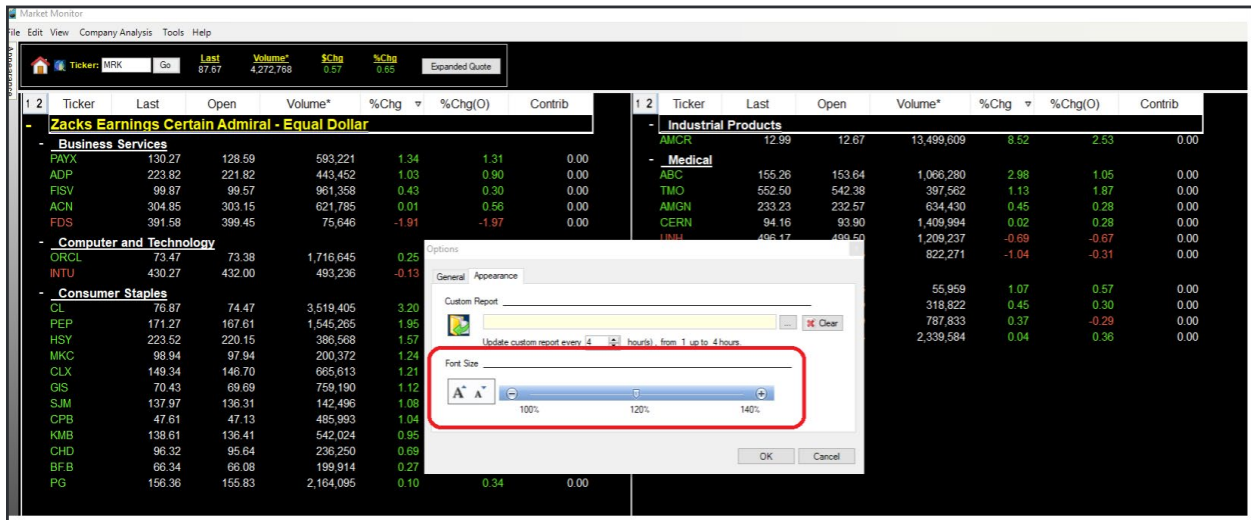
OK Cancel

Price Action: View Interval Change on multiple axis



Market Monitor

Ability to increase font size on the intraday quote screen



Expanded Quote — Last Trade Price is now 30-seconds delayed from BATS

File Edit View Company Analysis Tools Help

Appearance

Ticker: COST Go

COSTCO WHOLESALE CORPORATION - COMMON STOCK

Last Trade (Tick)	530.06	Volume	860,956
Change	1.98	Last Trade Size	100
%Change	0.37	Exchange	NASDAQ
Bid	529.37	Bid Size	200
Ask	529.74	Ask Size	100
Day High	531.85		
Day Low	522.81		
Prev Close	528.08		
52 Wk High	612.27		
52 Wk Low	371.11		
Open	531.60		
P/E Ratio	45.55	EPS	11.27
Ex Div. Date	04/28/2022	Dividend Date	N/A
Dividend	3.60		
Yield	0.68		

ZRS Support

All pop-ups including help topics using internet browsers will now use your default, and not only Internet Explorer

Added section in ZRS > Help > Video Tutorials with below:

Core

- [1. Getting Started](#)
- [2. Events](#)
- [3. Quote Monitor](#)
- [4. ZRS Fundamental Charting](#)
- [5. Zacks Valuation Model](#)
- [6. Estimates](#)
- [7. Research](#)
- [8. Financials](#)
- [9. Export Charts to Excel & Screenshots](#)
- [10. Pitchbooks](#)
- [11. Screening](#)
- [12. Excel Link](#)
- [13. Backtesting](#)
- [14. ZRS Search Function, Data & Product Manuals](#)

Portfolio Monitor

- [1. Getting Started](#)
- [2. Pitchbooks](#)
- [3. Accounts, Benchmarks & Time Periods](#)
- [4. Snapshot Reports](#)
- [5. Disaggregating ETF's & Mutual Funds](#)
- [6. Characteristic Comparison Reports](#)
- [7. Performance Measurement Reports](#)
- [8. Attribution Reports](#)

Financials

The view under Financials > Quarterly Summary & Estimates now displays 30 years of historical data (when applicable).

Quarterly Summary & Estimates													
TESLA INC (TSLA)													
5/10/2022 09:38:02 EST \$808.99													
Fiscal Year End: December													
Next Expected Report Date: Jul 25, 2022													
Fiscal Q1 (Mar)	Revenues	27,157	44.8%	18,756	80.5%	10,389	73.6%	5,985	31.8%	4,541	33.2%	3,409	26.4%
	Net Income	2,828	-14.8%	3,318	657.5%	438	2637.5%	16	-102.3%	-710	0.0%	-710	115.2%
	EPS – BNRI	3.66	13.7%	3.22	246.2%	0.93	272.0%	0.25	-130.5%	-0.82	-2.4%	-0.84	115.4%
	Div/Share			0.00		0.00		0.00		0.00		0.00	
Fiscal Q2 (Jun)	Revenues	27,873	45.8%	19,123	59.9%	11,958	98.1%	6,036	-4.9%	6,350	58.7%	4,002	43.4%
	Net Income			2,344	105.3%	1,142	998.1%	104	-125.5%	-408	-43.2%	-718	113.7%
	EPS – BNRI	3.76	62.8%	2.31	59.3%	1.45	229.5%	0.44	-195.7%	-0.46	-45.2%	-0.84	104.9%
	Div/Share					0.00		0.00		0.00		0.00	
Fiscal Q3 (Sep)	Revenues	32,057	39.0%	23,070	67.7%	13,757	56.8%	8,771	39.2%	6,303	-7.6%	6,824	128.6%
	Net Income			3,197	97.6%	1,618	439.3%	300	109.8%	143	-54.0%	311	-150.2%
	EPS – BNRI	4.35	51.0%	2.88	54.8%	1.86	144.7%	0.76	375.0%	0.16	-54.3%	0.35	-148.6%
	Div/Share					0.00		0.00		0.00		0.00	
Fiscal Q4 (Dec)	Revenues	37,375	45.0%	25,784	45.5%	17,719	64.9%	10,744	45.5%	7,384	2.2%	7,226	119.7%
	Net Income			3,554	53.1%	2,321	671.1%	301	166.4%	113	-19.3%	140	-120.7%
	EPS – BNRI	5.10	57.4%	3.24	27.6%	2.54	217.5%	0.80	627.3%	0.11	-31.3%	0.16	-120.8%
	Div/Share					0.00		0.00		0.00		0.00	
Year	Revenues	113,637	30.2%	87,255	62.1%	53,823	70.7%	31,536	28.3%	24,578	14.5%	21,461	82.5%
	Net Income	14,292	15.2%	12,411	124.9%	5,519	665.5%	721	-183.6%	-862	-11.7%	-976	-50.3%
	EPS	13.73	21.9%	11.26	66.1%	6.78	201.3%	2.25	-322.8%	-1.01	-13.7%	-1.17	-48.9%
	Div/Share					0.00		0.00		0.00		0.00	

ZACKS
ResearchSystem

For more information contact us:

📞 (866) 794-6065 🌐 www.zrs.com ✉️ ZRS@zacks.com

10 S. Riverside Plaza, Chicago, IL 60606